

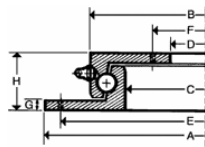
## Ball bearing races for turntable steering, for transport equipment up to 30 km/h



- Ball bearing races for turntable steering
- 2 steel rings with ball bearing races
- Precision steel bearings. Lubrication nipple
- Black primed surface

We recommend 4 - 6 bolts for flanges under  $\varnothing$  600 mm. From 600 mm we recommend at least 8 bolts, each M 10 or M 12. Rigidity class 8.8. Both flange rings without bore holes.

**Attention!** Size D ( $\varnothing$  inner top ring) is subject to manufacturing tolerances of +2 mm / -15 mm. For size A, manufacturing tolerances of 0 to +5 mm. Check tolerances to ensure smooth running fit.



A = Flange  $\varnothing$

B = Outer  $\varnothing$  upper ring

C = Inner  $\varnothing$  lower ring

D = Inner  $\varnothing$  upper ring

E = Circle of holes  $\varnothing$  lower ring

F = Circle of holes  $\varnothing$  upper ring

Flange thickness G mm 8  
Structural height H mm 45

Max. load axial kg	Flange diameter mm	Outer diameter upper ring mm	Inner diameter lower ring mm	Inner diameter upper ring mm	Hole circle diameter, lower ring mm	Hole circle diameter, upper ring mm	Ref.
750	400	342	292	230	375	260	<a href="#">188 964</a> ●
900	500	442	392	330	475	360	<a href="#">188 972</a> ●
1800	500	437	384	315	475	340	<a href="#">189 030</a> ●
1500	650	592	542	480	625	510	<a href="#">188 980</a> ●
2500	650	587	534	465	625	490	<a href="#">189 049</a> ●
1800	750	692	642	580	725	610	<a href="#">188 999</a> ●

2500	850	792	742	680	825	710	<a href="#">189 006</a>	●
3000	950	892	842	780	925	810	<a href="#">189 014</a>	●
3500	1050	992	942	880	1025	910	<a href="#">188 956</a>	●
4500	1050	987	934	865	1025	890	<a href="#">189 022</a>	●