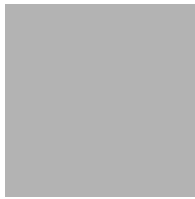


VACUUM PUMPS MINI

X20L



- ▶ Extra vacuum level to 93 -kPa
- ▶ Small size and low weight
- ▶ Use in tightly sealed or non-porous applications

Supplied with push-in hose connector for compressed air (for pumps with connection plate B).
 Supplied with push-in hose connector for compressed air and external through-flow silencer (for pumps with connection plate C).

TECHNICAL DATA

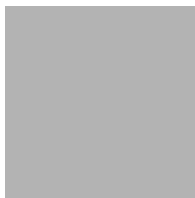
Description	Unit	Value
Feed pressure, max.	MPa	0.7
Noise level	dBA	62-66
Temperature range	°C	-20-80
Weight	g	60-74
Material		Al, ABS, PA, POM, SS, NBR

VACUUM FLOW

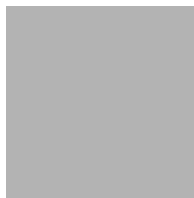
Feed pressure MPa	Air consumption NI/s	Vacuum flow (NI/s) at different vacuum levels (-kPa)										Max vacuum -kPa
		0	10	20	30	40	50	60	70	80	90	
0.40	1.6	1.9	1.0	0.50	0.44	0.38	0.30	0.25	0.17	0.10	0.020	93

EVACUATION TIME

Feed pressure MPa	Air consumption NI/s	Evacuation time (s/l) to reach different vacuum levels (-kPa)										Max vacuum -kPa
		10	20	30	40	50	60	70	80	90		
0.40	1.6	0.055	0.20	0.40	0.65	0.97	1.4	1.9	2.7	5.1	93	



Vacuum flow

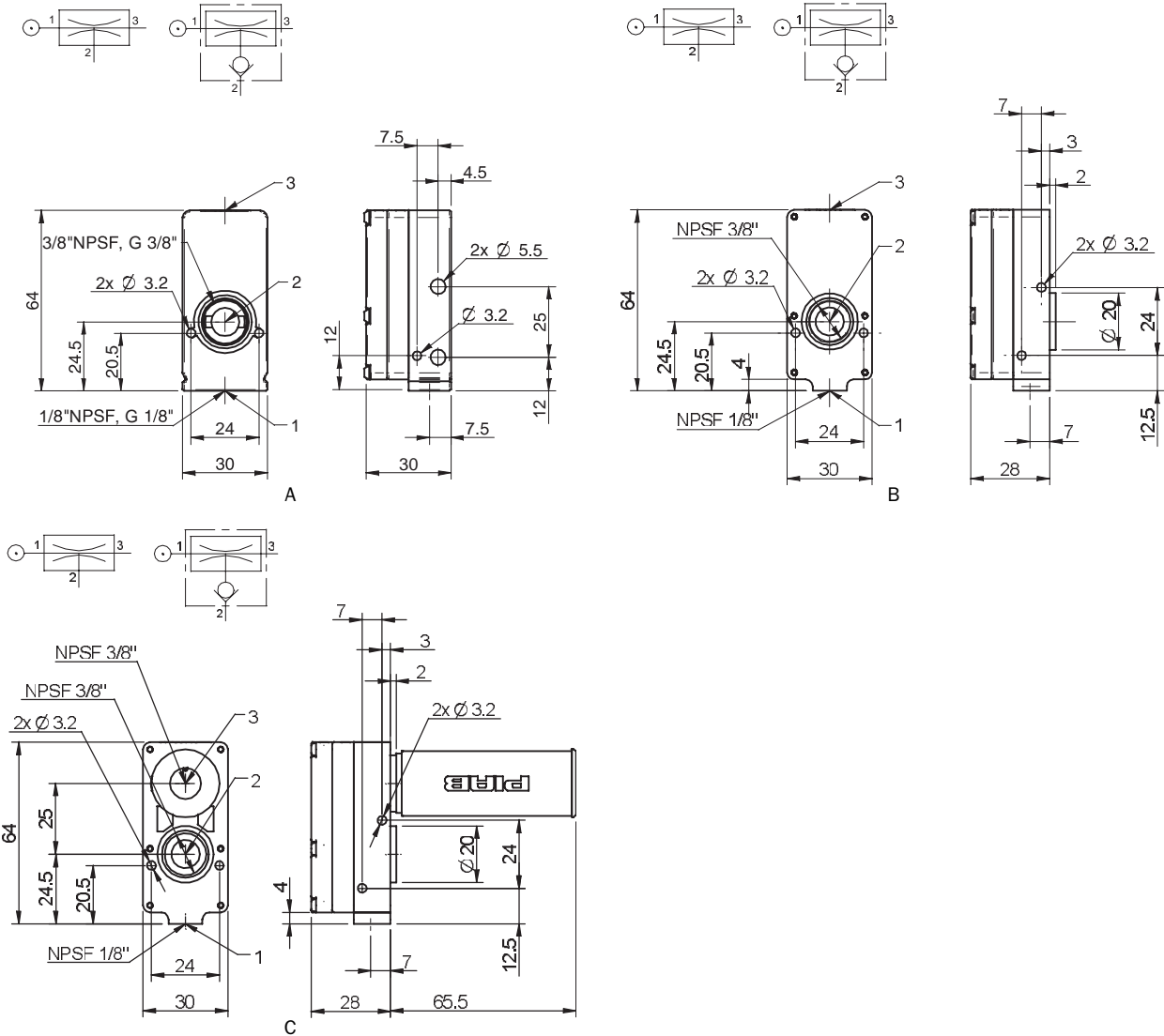


Evacuation time

VACUUM PUMPS MINI

ORDERING INFORMATION

Description	Art. No.
A Vacuum pump MINI X20L, conn. B1, NBR sealings	0103203
A Vacuum pump MINI X20L, conn. B1, NBR sealings, non-return valve	0103204
B Vacuum pump MINI X20L, conn. B, NBR sealings	3222278
B Vacuum pump MINI X20L, conn. B, NBR sealings, non-return valve	3222278A
C Vacuum pump MINI X20L, conn. C, NBR sealings	3222279
C Vacuum pump MINI X20L, conn. C, NBR sealings, non-return valve	3222279A



ORDERING INFORMATION, ACCESSORIES

Description	Art. No.
Sealing kit MINI 5-28, NBR sealings	3201097
Sealing kit MINI 5-28, Viton® sealings	3201097V
Sealing kit MINI 5-28, EPDM sealings	3201097E

Kits include flap valves, gaskets and compressed-air filters.