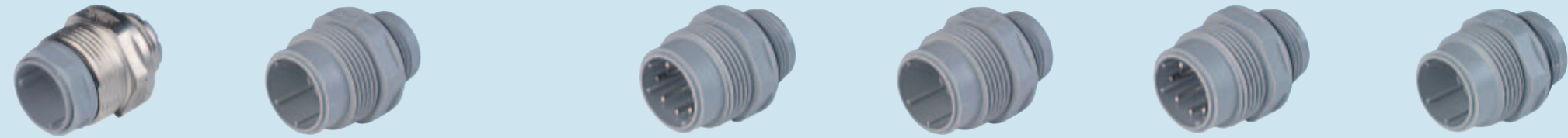


# CIRCULAR CONNECTORS NR-SERIES



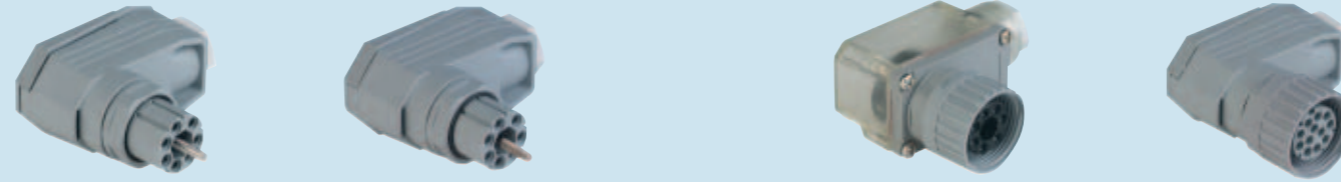
Panel-mounted connector



<b>CIRCULAR CONNECTORS NR-SERIES</b>	<b>Product description</b>							
	Description	Panel-mounted connector with metal screw-in casing	Panel-mounted connector with contact bearer in the casing (monoblock design)		Panel-mounted connector with contact bearer in the casing (monoblock design), pins hermetically mounted to prevent ingress of liquids	Panel-mounted connector with contact bearer in the casing (monoblock design)	Panel-mounted connector with contact bearer in the casing (monoblock design), pins hermetically mounted to prevent ingress of liquids	Panel-mounted connector with contact bearer in the casing (monoblock design)
	Type	<b>N6R AM</b>	<b>N6R AM 2</b>		<b>N6R AM 2 D</b>	<b>N6R AM 2 M20</b>	<b>N6R AM 2 D M20</b>	<b>N6R AM 4</b>
	Order No.	931 434-001	931 592-001		932 207-206	932 207-206	932 207-206	931 592-003
	Type of contact	male	male		male	male	male	male
	Number of contacts	6 + PE	6 + PE		6 + PE	6 + PE	6 + PE	6 + PE
	Conductor size	max. 1.5 mm <sup>2</sup>	max. 1.5 mm <sup>2</sup>		max. 1.5 mm <sup>2</sup>	max. 1.5 mm <sup>2</sup>	max. 1.5 mm <sup>2</sup>	max. 1.5 mm <sup>2</sup>
	Standard	DIN 43 651	DIN 43 651		DIN 43 651	DIN 43 651	DIN 43 651	DIN 43 651
	Housing Color	grey	grey		grey	grey	grey	grey
	<b>Drawing</b>							
<b>Technical data</b>								
Pin dimensions	1.6 mm	1.6 mm		1.6 mm	1.6 mm	1.6 mm	1.6 mm	
Rated voltage	250 V AC/DC	250 V AC/DC		250 V AC/DC	250 V AC/DC	250 V AC/DC	250 V AC/DC	
Rated current	10 A	10 A		10 A	10 A	10 A	10 A	
Contact resistance	≤ 5 mOhm	≤ 5 mOhm		≤ 5 mOhm	≤ 5 mOhm	≤ 5 mOhm	≤ 5 mOhm	
Type of termination	crimp	crimp		solder	crimp	solder	crimp	
Suitable cables	0.5 mm <sup>2</sup> to 1.5 mm <sup>2</sup>	0.5 mm <sup>2</sup> to 1.5 mm <sup>2</sup>		0.5 mm <sup>2</sup> to 1.5 mm <sup>2</sup>	0.5 mm <sup>2</sup> to 1.5 mm <sup>2</sup>	0.5 mm <sup>2</sup> to 1.5 mm <sup>2</sup>	0.5 mm <sup>2</sup> to 1.5 mm <sup>2</sup>	
Mounting					M20x1.5	M20x1.5	PG 16	
<b>Material</b>								
Contact surface material	Ag	Ag		Ag	Ag	Ag	Ag	
Contact bearer material	PETP	PETP		PETP	PETP	PETP	PETP	
Housing material	PETP	PETP		PETP	PETP	PETP	PETP	
<b>Environmental conditions</b>								
Protection class (IEC 60529)	IP 65	IP 65		IP 65	IP 65	IP 65	IP 65	
Temperature range	-40 °C to +90 °C	-40 °C to +90 °C		-40 °C to +90 °C	-40 °C to +90 °C	-40 °C to +90 °C	-40 °C to +90 °C	
<b>Packaging unit</b>								
Packaging unit	10 pieces	10 pieces		10 pieces	10 pieces	10 pieces	10 pieces	
<b>Scope of delivery and accessories</b>								
Scope of delivery	1 panel-mounted connector, not assembled, in polythene bag with assembly instructions	1 panel-mounted connector with O-Ring in polythene bag with assembly instructions		1 panel-mounted connector with O-Ring in polythene bag with assembly instructions	1 panel-mounted connector with O-Ring in polythene bag with assembly instructions	1 panel-mounted connector with O-Ring in polythene bag with assembly instructions	1 panel-mounted connector with O-Ring in polythene bag with assembly instructions	
Accessories to order separately	can be plugged into N6R FF, N6R FF R, N6R EF; coding NC 6, order no. 831 002-011 protective cover SHK 2, order no. 733 845-001, contacts: RSC 162	can be plugged into N6R FF, N6R FF R, N6R EF; coding NC 6, order no. 831 002-011 protective cover SHK 1, order no. 733 849-011, contacts: RSC 162		can be plugged into N6R FF, N6R FF R, N6R EF; coding NC 6, order no. 831 002-011 protective cover SHK 1, order no. 733 849-011	can be plugged into N6R FF, N6R FF R, N6R EF; coding NC 6, order no. 831 002-011 protective cover SHK 1, order no. 733 849-011 contacts: RSC 162	can be plugged into N6R FF, N6R FF R, N6R EF; coding NC 6, order no. 831 002-011 protective cover SHK 1, order no. 733 849-011	can be plugged into N6R FF, N6R FF R, N6R EF; coding NC 6, order no. 831 002-011 protective cover SHK 1, order no. 733 849-011 contacts: RSC 162	

# CIRCULAR CONNECTORS NR-SERIES

Angled cable socket



<b>CIRCULAR CONNECTORS NR-SERIES</b>	<b>Product description</b>						
	Description	Angled cable socket with strain relief and knurled screw	Angled cable socket with strain relief		Angled cable socket with strain relief, transparent cap, for installation of the LED insert	Angled cable socket with strain relief	
	Type	<b>N6R FF R</b>	<b>N6R FF</b>		<b>N6R FF S 11</b>	<b>N11R FF</b>	
	Order No.	931 553-106	931 435-106		932 194-112	932 632-106	
	Type of contact	female	female		female	female	
	Number of contacts	6 + PE	6 + PE		6 + PE	11 + PE	
	Cable gland	PG 11	PG 11		PG 11	PG 11	
	Cable diameter	7 mm to 9 mm	7 mm to 9 mm		7 mm to 9 mm	8 mm to 10 mm	
	Conductor size	max. 1.5 mm <sup>2</sup>	max. 1.5 mm <sup>2</sup>		max. 1.5 mm <sup>2</sup>	max. 0.5 mm <sup>2</sup>	
	Standard	DIN 43651	DIN 43651		DIN 43 651	DIN 43 651	
Housing Color	grey	grey		transparent/grey	grey		
<b>Drawing</b>							
<b>Technical data</b>							
Pin dimensions	1.6 mm	1.6 mm		1.6 mm	1.6 mm		
Rated voltage	250 V AC/DC	250 V AC/DC		250 V AC/DC	60 V AC/DC		
Rated current	10 A	10 A		10 A	5 A		
Contact resistance	≤ 5 mOhm	≤ 5 mOhm		≤ 5 mOhm	≤ 5 mOhm		
Type of termination	crimp	crimp		screw	crimp		
Suitable cables	0.5 mm <sup>2</sup> to 1.5 mm <sup>2</sup>	0.5 mm <sup>2</sup> to 1.5 mm <sup>2</sup>		0.5 mm <sup>2</sup> to 1.5 mm <sup>2</sup>	0.14 mm <sup>2</sup> to 0.5 mm <sup>2</sup>		
<b>Material</b>							
Contact surface material	Ag	Ag		Ag	Ag		
Contact bearer material	PETP	PETP		PETP	PETP		
Housing material	PETP	PETP		PETP	PETP		
<b>Environmental conditions</b>							
Protection class (IEC 60529)	IP 65	IP 65		IP 65	IP 65		
Temperature range	-40 °C to +90 °C	-40 °C to +90 °C		-40 °C to +90 °C	-40 °C to +90 °C		
<b>Packaging unit</b>							
Packaging unit	10 pieces	10 pieces		10 pieces	10 pieces		
<b>Scope of delivery and accessories</b>							
Scope of delivery	1 cable socket, with knurled screw, not assembled, in polythene bag, with assembly instructions	1 cable socket, with central screw M 3 x 60, not assembled, in polythene bag, with assembly instructions		1 cable sockets, not assembled, in polythene bag, with assembly instructions	1 cable sockets, not assembled, in polythene bag, with assembly instructions		
Accessories to order separately	can be plugged into N6R AM, N6R AM..., N6R BM..., N6R DM; coding NC 6, order no. 831 002-011 contacts: RBC 162	can be plugged into N6R AM, N6R AM..., N6R BM..., N6R DM; coding NC 6, order no. 831 002-011 contacts: RBC 162		can be plugged into N6R AM, N6R AM..., N6R BM..., N6R DM; LED-insert N6R 3 LED 24, order no. 831 411-001 LED-insert N6R 3 LED 24 DB, order no. 831 618-001 coding NC 6, order no. 831 002-011 contacts: RBC 162	can be plugged into N11R AM, N11R AM 5 contacts: RBC 162/1		