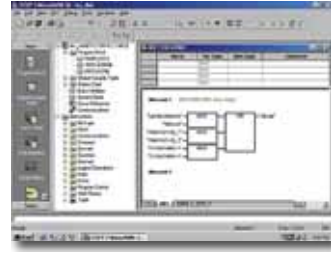


Software

## STEP 7 Micro/WIN



- The simple, easy to learn programming software under Windows 2000/XP for the SIMATIC S7-200
- A large number of wizards support the programming even of difficult automation tasks
- For fast startup and timesaving programming
- With large scope of functions
- Based on standard Windows software (user interface similar to standard applications, such as Microsoft Word, Outlook)
- With 3 standard editors STL, LAD and CSF; you can switch between these editors at any time
- Generation, exporting and importing of user-specific libraries (including standard commands and user-defined subroutines)
- Documentation CD with manuals, software tools and example programs as support