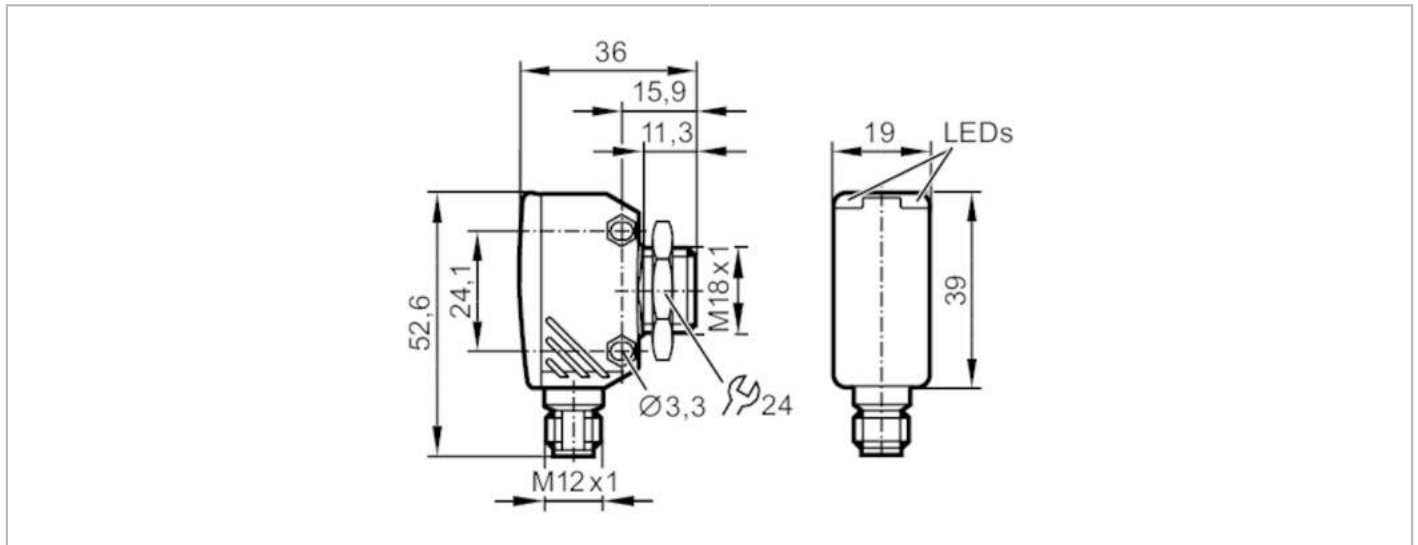


OGS280



Through-beam sensor transmitter

OGS-00KG/US/CUBE



| Product characteristics | |
|--------------------------------|---|
| Type of light | red light |
| Housing | rectangular with M18 thread |
| Application | |
| Function principle | Through-beam sensor |
| Electrical data | |
| Operating voltage [V] | 10...30 DC; (cULus - Class 2 source required) |
| Voltage rating [V] | 32 |
| Current consumption [mA] | 17 |
| Protection class | III |
| Reverse polarity protection | yes |
| Max. power-on delay time [ms] | 300 |
| Type of light | red light |
| Wave length [nm] | 662 |
| Monitoring range | |
| Transmitter / receiver | transmitter |
| Range [m] | 20 |
| Max. light spot diameter [mm] | 800 |
| Light spot dimensions refer to | at maximum range |
| Interfaces | |
| Communication interface | IO-Link |
| Transmission type | COM2 (38,4 kBaud) |
| IO-Link revision | 1.1 |
| SDCI standard | IEC 61131-9 |
| Profiles | Smart Sensor - SSP 0 Common - I&D |
| | Generic Profiled Sensor Identification and Diagnosis |
| SIO mode | no |
| Required master port class | A |

OGS280



Through-beam sensor transmitter

OGS-00KG/US/CUBE

| | | |
|---------------------------------|---|-------------------|
| Min. process cycle time | [ms] | 2.5 |
| IO-Link process data (cyclical) | Function | bit length |
| IO-Link functions (acyclical) | device status | 4 |
| Supported DeviceIDs | application specific tag; operating hours counter | |
| Note | Type of operation | DeviceID |
| | default | 1135 |
| | For further information please see the IODD PDF file at "Downloads" | |

Operating conditions

| | | |
|---------------------|------|--------------|
| Ambient temperature | [°C] | -25...60 |
| Storage temperature | [°C] | -40...60 |
| Protection | | IP 65; IP 67 |

Tests / approvals

| | | |
|-------------|---------|----------------|
| EMC | | EN 60947-5-2 |
| MTTF | [years] | 1011 |
| UL approval | | Ta |
| | | -25...60 °C |
| | | Enclosure type |
| | | Type 1 |
| | | voltage supply |
| | | Class 2 |
| | | File number UL |
| | | E174191 |

Mechanical data

| | | |
|--------------------|------|-----------------------------|
| Weight | [g] | 59.5 |
| Housing | | rectangular with M18 thread |
| Dimensions | [mm] | 52.6 x 19 x 36 |
| Thread designation | | M18 x 1 |
| Material | | diecast zinc; PEI |
| Lens material | | PMMA |
| Lens alignment | | Side sensing |

Displays / operating elements

| | | |
|---------|-------|----------------|
| Display | Power | 1 x LED, green |
|---------|-------|----------------|

Accessories

| | |
|----------------|-------------|
| Items supplied | lock nut: 1 |
|----------------|-------------|

Remarks

| | |
|---------------|--------|
| Pack quantity | 1 pcs. |
|---------------|--------|

Electrical connection

Connector: 1 x M12; coding: A

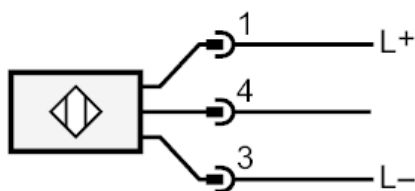




Through-beam sensor transmitter

OGS-00KG/JS/CUBE

Connection



Diagrams and graphs

excess gain graph

